

POWER LORDS™

EXPANDED MEMORY!!

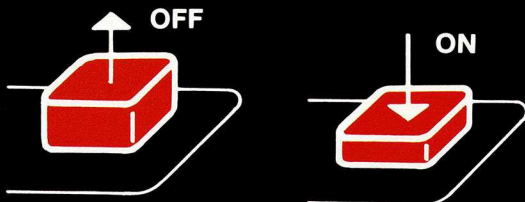
OFFICIAL RULES

ODYSSEY²



IMPORTANT!

Always be sure that the power to your Odyssey² console is turned off before inserting a game cartridge. This protects the electronic components and extends the life of the unit.



TO BEGIN:

- 1 Insert the cartridge into the slot of the Odyssey² console with the label side facing the alpha-numeric keyboard.
- 2 Turn on the power by pressing the power button on the console. SELECT GAME will appear on your TV screen. If it does not, press the RESET key on the alpha-numeric keyboard.



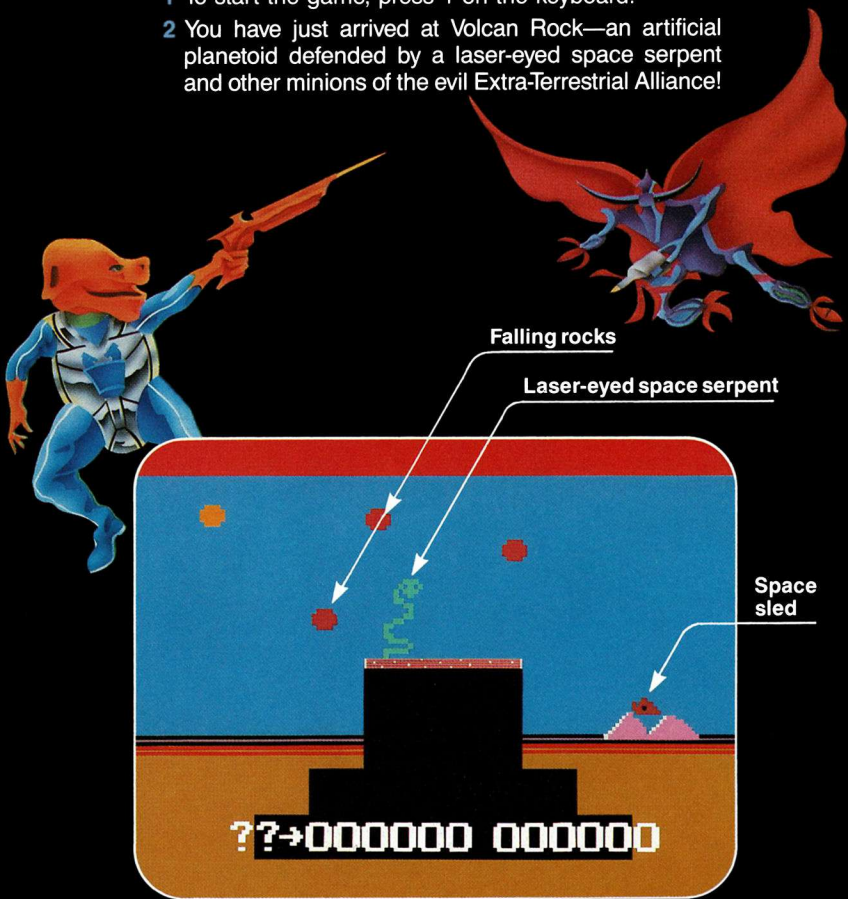
On-screen colors may vary according to individual TV's color adjustments.

Copyright © 1983 North American Philips Consumer Electronics Corporation
Software Copyright © 1983 E. Averett
Power Lords™ and copyright © 1983 Strongin-Mayem International

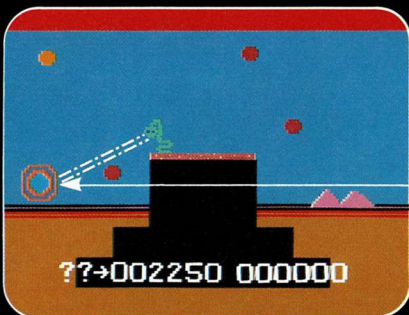
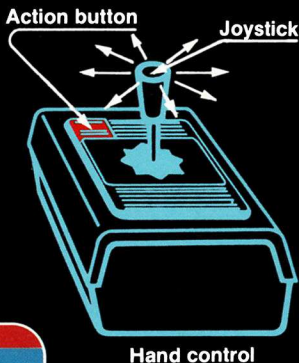
POWER LORDS

(1 or more players)

- 1 To start the game, press 1 on the keyboard.
- 2 You have just arrived at Volcan Rock—an artificial planetoid defended by a laser-eyed space serpent and other minions of the evil Extra-Terrestrial Alliance!



- 3 Use the joystick of the right hand control to fly the space sled.
- 4 Press the action button to fire your lasers.
- 5 Warning! Your space sled can be destroyed by falling lava, rocks, contact with the space serpent's body or a blast from its laser eyes.



- 6 Gryptogg, Raygoth and Arkus of the Extra-Terrestrial Alliance, will periodically open doors in the volcano to fire a gravitational ray. The higher your score, the stronger the artificial gravity fields will become and the more likely you will be drawn to your doom.
- 7 Direct hits of your lasers will stun the space serpent and destroy falling rocks. You can defeat the gravitational ray by blasting the door in the volcano.

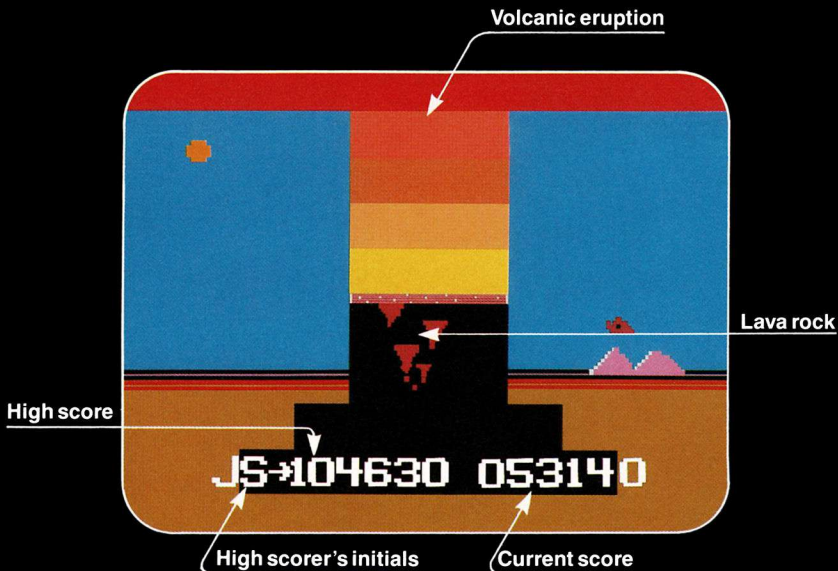


8 SCORING:

Blasting lava during volcanic eruption 3 points
Stunning the space serpent 15 points
Hitting an open door 45 points
Destroying lava rock 75 points
Surviving a volcanic eruption 1000 points

9 The score of your current game appears at the lower right of your screen.

10 The high score in a series of games will appear at the lower left of your screen.



- 11 Two question marks request the initials of the high scoring player. The high scoring player enters his or her initials through the keyboard. The high score and the high scoring player's initials will remain on the screen until a higher score is achieved in succeeding games.
- 12 To start a new scoring cycle, press RESET and then press 1.



